



SUNCLIX mini

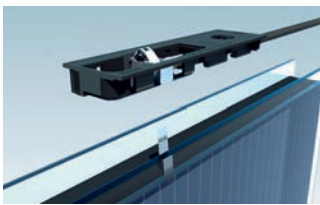
Miniature connection system
for building-integrated
photovoltaics – BIPV

SUNCLIX mini – miniature connection system for building-integrated photovoltaics – BIPV

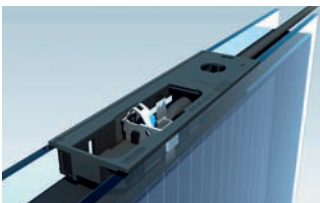
Absorb solar energy not only from the roof of a building, but from its entire surface.

Phoenix Contact has developed a new DC plug-in system in miniature format for this new trend in energy production using photovoltaics. In this way, the facade of a building is efficiently used to generate energy.

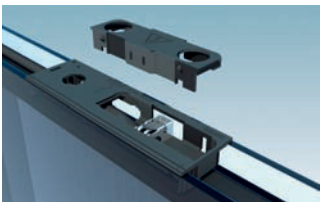
① Installation of the module junction box



1. Position the module junction box above the ribbon.



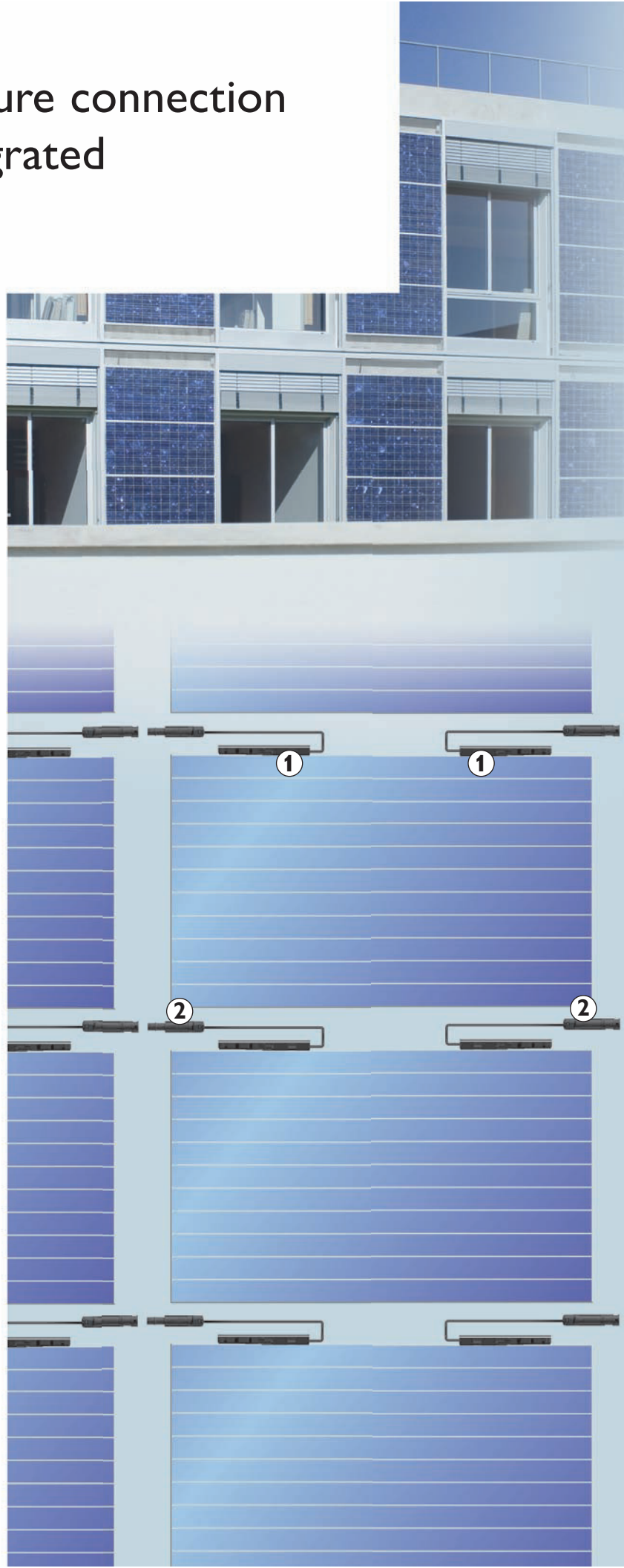
2. Remove the adhesive strip protection and position the module junction box on the edge of the glass.



3. Insert the ribbon in the spring case and snap in the spring. Close the connection area with the cover.



4. Fill each of the module junction box in turn with sealant using the special opening.



Technical data

① Module junction box

- Current: 5 A
- Voltage: 1000 V DC
- Qualified ribbon:
width: 5 mm/
thickness: 0.05 to 0.2 mm
- Conductor cross section:
2.5 mm²
- Dimensions (W x H x D):
92 x 40.4 x 9.5 mm
- Spring connection
- VDE approval according to
DIN EN 50548 (in preparation)

- Compact design:
Ø just 11 mm
- Pierce connection
- IP67 protection
- VDE approval according to
DIN EN 50521

③ DC string diode

- Current: 5 A
- Voltage: 1000 V
- Reverse voltage: 2200 V
- Conductor cross section:
2.5 mm²
- Dimensions (L x W x H):
100 x 38 x 11 mm
- IP67 protection
- VDE approval according to
DIN EN 50548 (VDE 126-3)

② DC plug-in connector

- Current: 15 A
- Voltage: 1000 V
- Conductor cross section:
2.5 mm²

SUNCLIX mini – product range



One-piece module junction box

One module junction box is used per position (right and left module junction box). Both module junction boxes are integrated into the facade module and subsequently potted.



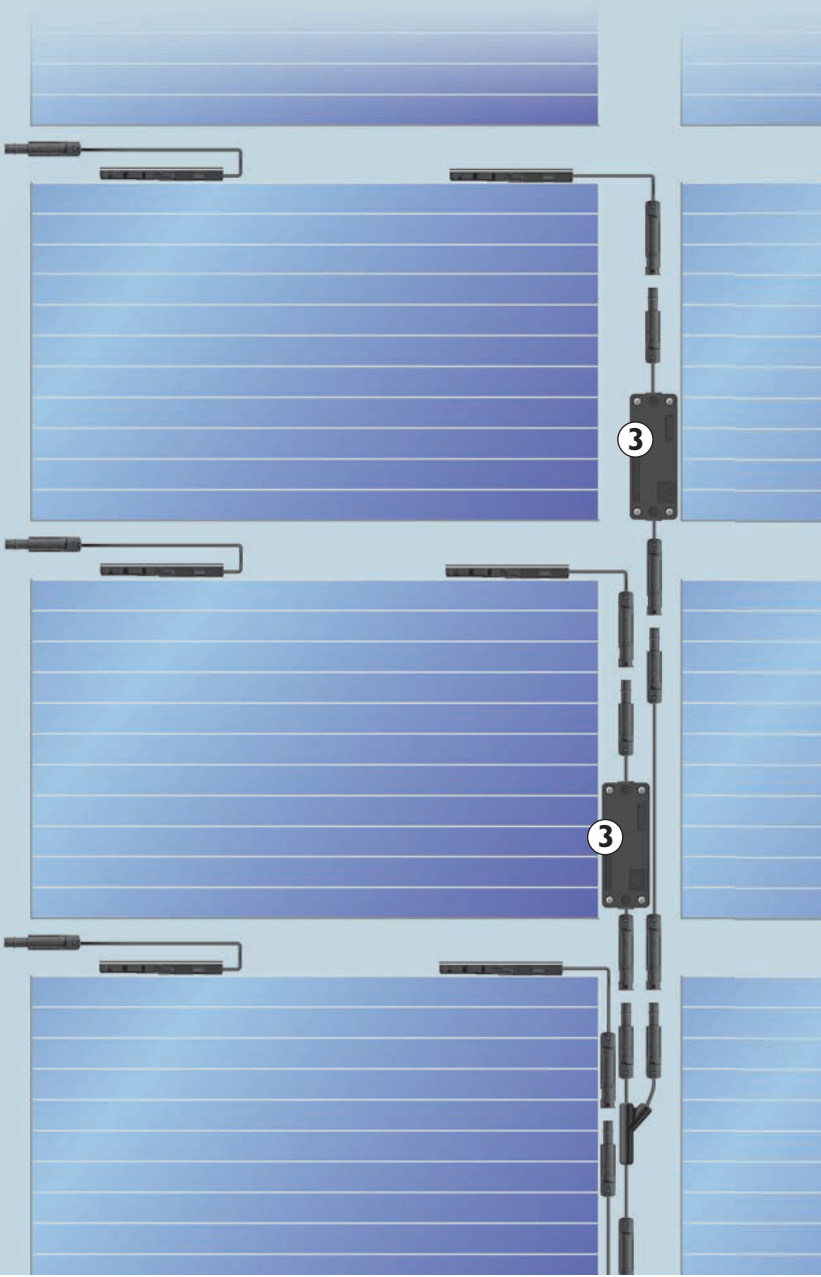
Miniature DC plug-in connectors for field assembly

The compact design of the plug-in connectors enables concealed installation behind the PV modules or direct installation within the facade frames.



Compact DC string diode

Return currents can occur in PV modules as a result of shading. The stable housing and flat design of the DC string diode ensure safe current flow between the facade modules.



Further information on the products presented here and on the world of solutions from Phoenix Contact can be found at www.phoenixcontact.net/products



Or contact us directly.



Modular Terminal Blocks
CLIPLINE 1



Marking Systems, Tools, and Mounting Material
CLIPLINE 2



Connection Technology for Field Devices and Field Cabling
PLUSCON



Device Connection Technology and Electronic Housings
COMBICON



Power and Signal Quality
TRABTECH



Signal Converters, Switching Devices, Power Supply Units
INTERFACE



Automation Components and Systems
AUTOMATION

PHOENIX CONTACT GmbH & Co. KG
32823 Blomberg, Germany
Phone: +49 (0) 52 35 3-00
Fax: +49 (0) 52 35 3-4 12 00
www.phoenixcontact.com